

Solutions - Quiz 1

(January 27th @ 5:30 pm)

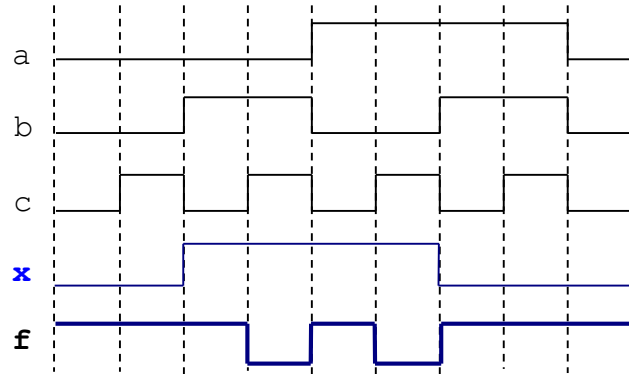
PROBLEM 1 (30 PTS)

- Complete the timing diagram of the logic circuit whose VHDL description is shown below:

```
library ieee;
use ieee.std_logic_1164.all;

entity test is
  port ( a, b, c: in std_logic;
        f: out std_logic);
end test;

architecture struct of test is
  signal x: std_logic;
begin
  x <= a xor b;
  f <= x nand c;
end struct;
```

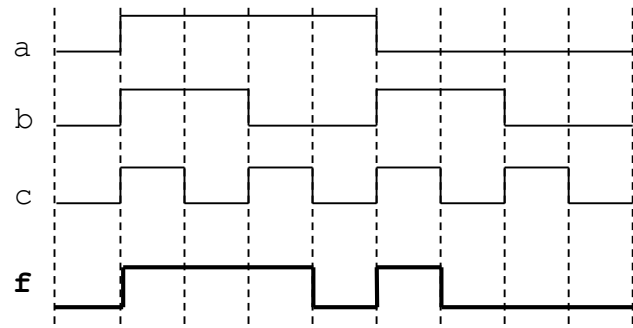
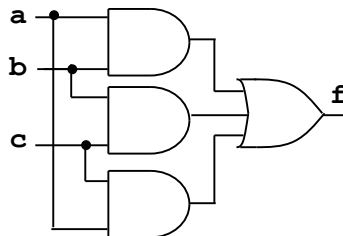


PROBLEM 2 (40 PTS)

- The following is the timing diagram of a logic circuit with three inputs. Simplify the Boolean expression of the circuit and sketch the minimized circuit.

	ab			
c	00	01	11	10
0	0	0	1	0
1	0	1	1	1

$f = ab + bc + ac$



PROBLEM 3 (30 PTS)

- Complete the timing diagram of the digital circuit shown below. You must consider the propagation delays. Assume the propagation delay of every gate is 5 ns. The initial values of all signals are plotted in the figure.

